

NOTE:
ALL FIXTURES SHALL BE PROVIDED WITH
THERMOSTATIC MIXING VALVES.

T.O. BULKHEAD
ELEV. 105.61'
27.8 PSI

ROOF
ELEV. 95.50'

ROOF
ELEV. 95.50'
32.2 PSI

3rd FLOOR
ELEV. 84.75'

3rd FLOOR
ELEV. 84.75'
36.9 PSI

2nd FLOOR
ELEV. 75.50'

2nd FLOOR
ELEV. 75.50'
40.9 PSI

1st FLOOR
ELEV. 66.25'

1st FLOOR
ELEV. 66.25'
44.9 PSI

CELLAR FLOOR
ELEV. 57.23'

CELLAR FLOOR
ELEV. 57.23'
48.8 PSI

NEW WORK
STARTS HERE

TO SPRINKLER
SYSTEM (SEE
FIRE PROTECTION
DRAWINGS)

NEW 2" NYC
HOUSE METER

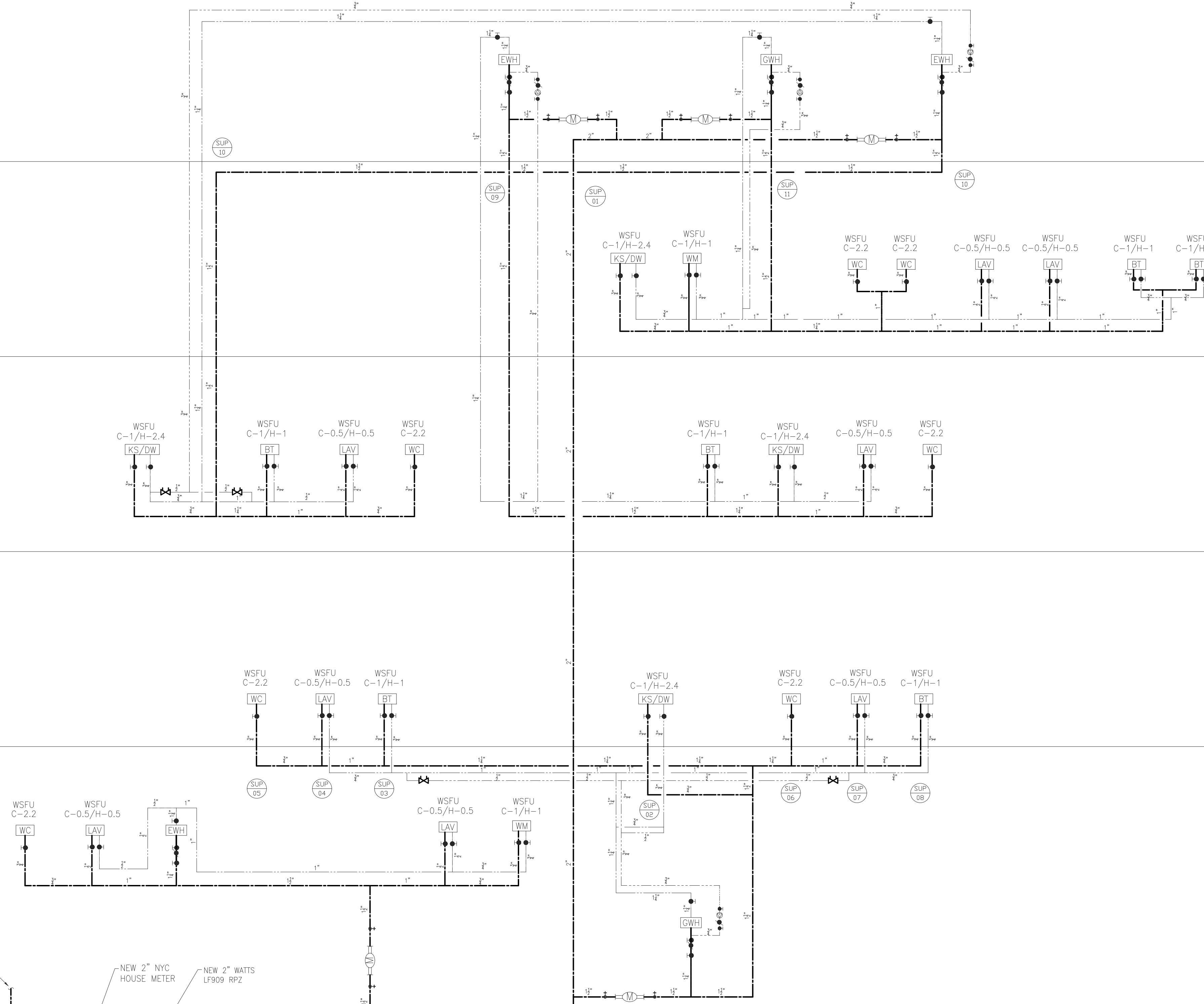
NEW 2" WATTS
LF909 RPZ

NEW GRUNDFOSS CRE 10-6
DOMESTIC BOOSTER PUMP
RATED 30 GPM @ 30 PSI

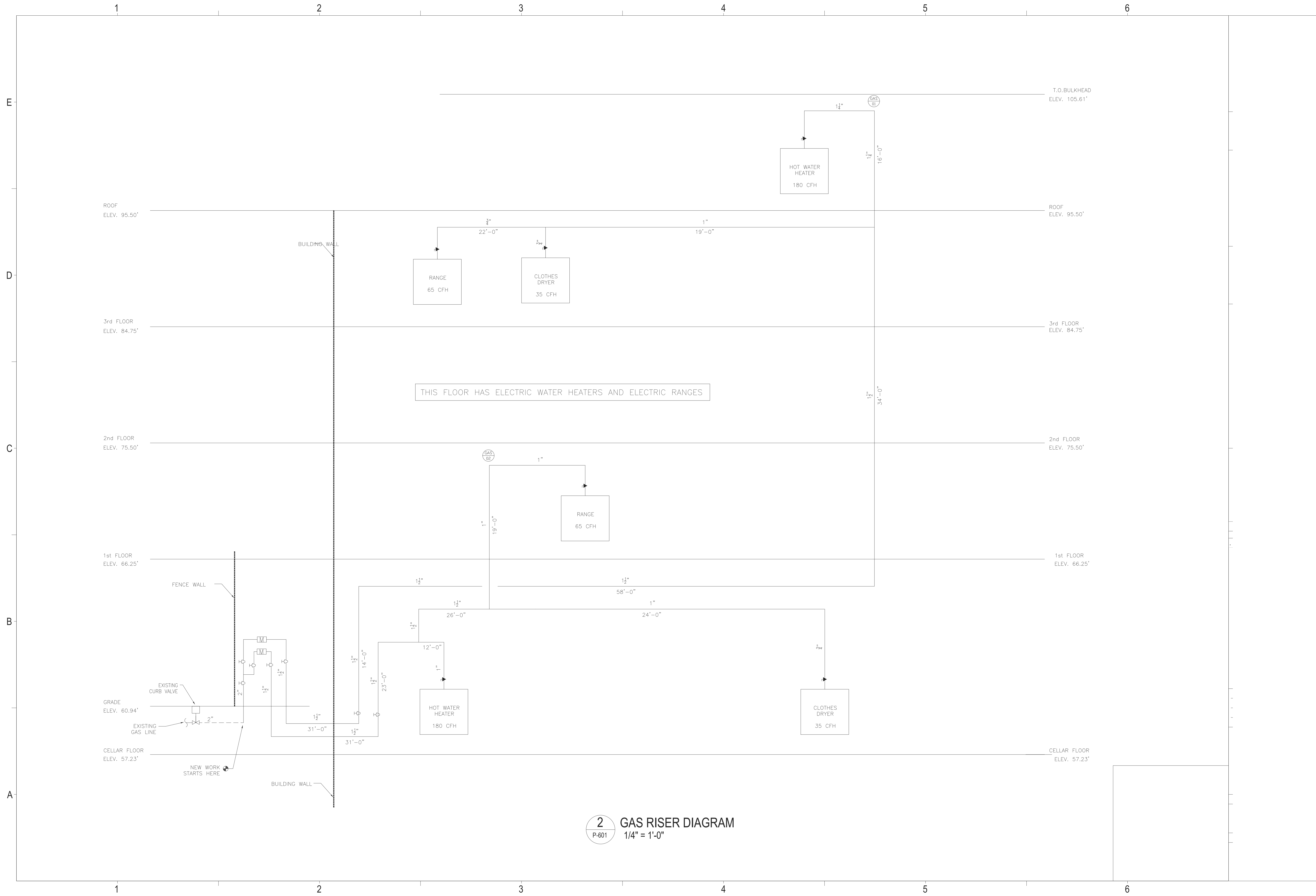
BUILDING WALL

BUILDING WALL

4" CURB
VALVE



1 WATER SUPPLY RISER DIAGRAM
P-601 1/4" = 1'-0"



THIS FLOOR HAS ELECTRIC WATER HEATERS AND ELECTRIC RANGES

2 GAS RISER DIAGRAM
 P-601 1/4" = 1'-0"

1

2

3

4

5

6

E

D

C

B

A

ROOF
ELEV. 95.50'

3rd FLOOR
ELEV. 84.75'

2nd FLOOR
ELEV. 75.50'

1st FLOOR
ELEV. 66.25'

GRADE
ELEV. 60.94'

CELLAR FLOOR
ELEV. 57.23'

T.O. BULKHEAD
ELEV. 105.61'

ROOF
ELEV. 95.50'

3rd FLOOR
ELEV. 84.75'

2nd FLOOR
ELEV. 75.50'

1st FLOOR
ELEV. 66.25'

CELLAR FLOOR
ELEV. 57.23'

BUILDING WALL

FENCE WALL

EXISTING CURB VALVE

EXISTING GAS LINE

NEW WORK STARTS HERE

BUILDING WALL

RANGE
65 CFH

CLOTHES DRYER
35 CFH

HOT WATER HEATER
180 CFH

RANGE
65 CFH

HOT WATER HEATER
180 CFH

CLOTHES DRYER
35 CFH

GAS
01

GAS
02

M

M

M

M

M

M

M

M

M

M

M

M

M

M

M

M

M

M

M

M

M

M

M

M

M

M

M

M

M

M

M

M

M

M

M

M

M

M

M

M

1

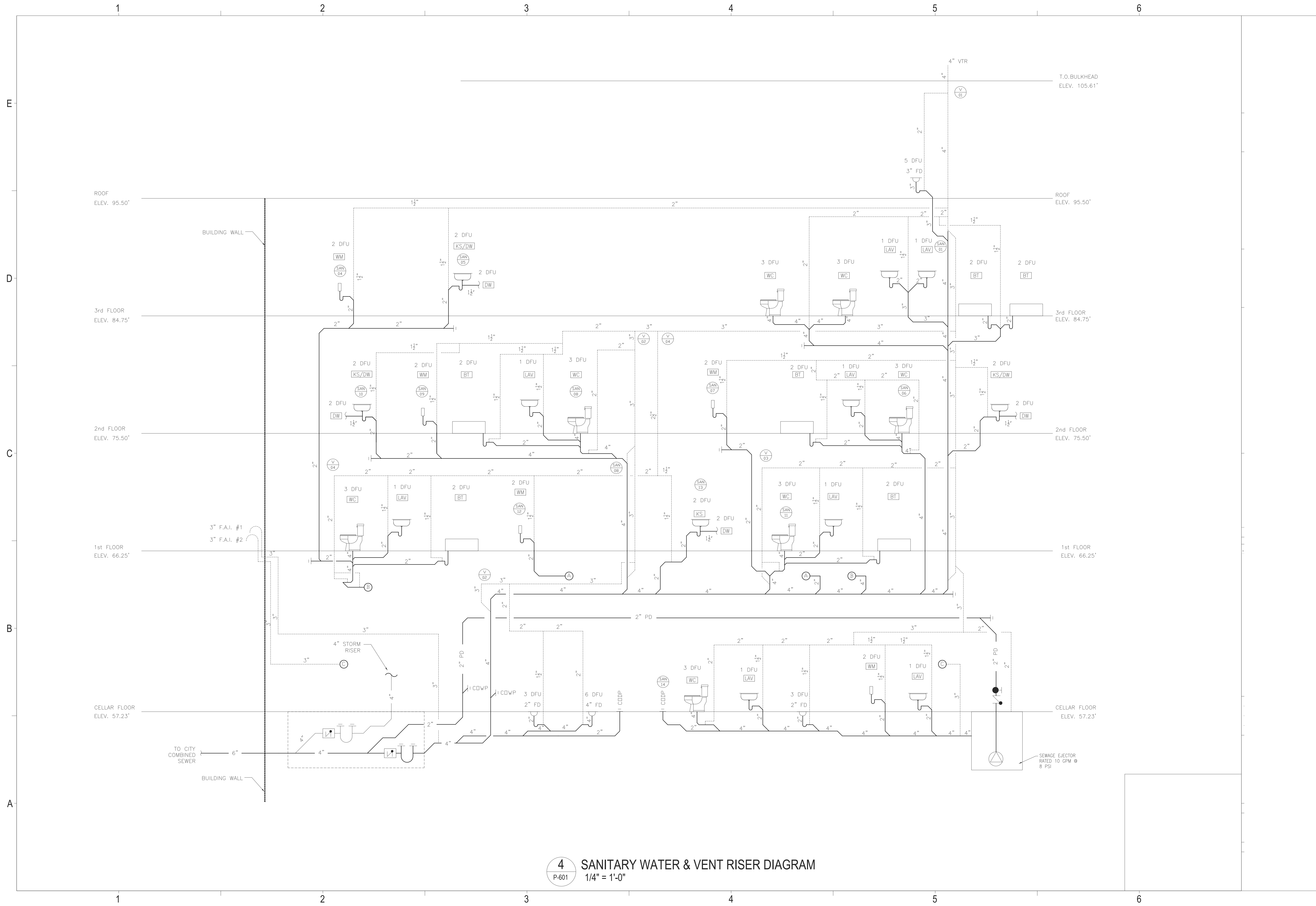
2

3

4

5

6



4 SANITARY WATER & VENT RISER DIAGRAM
 P-601 1/4" = 1'-0"