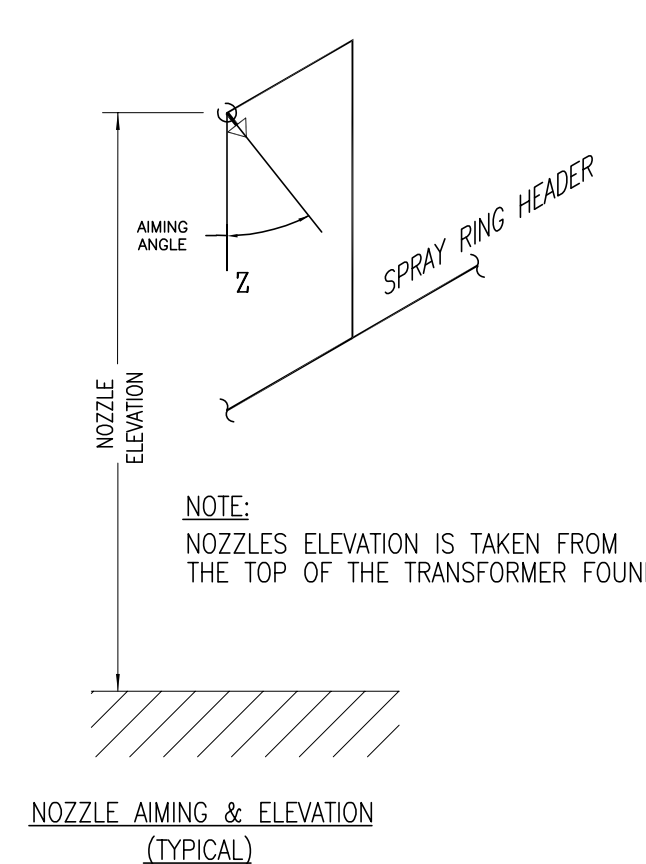


ISOMETRIC VIEW
NTS

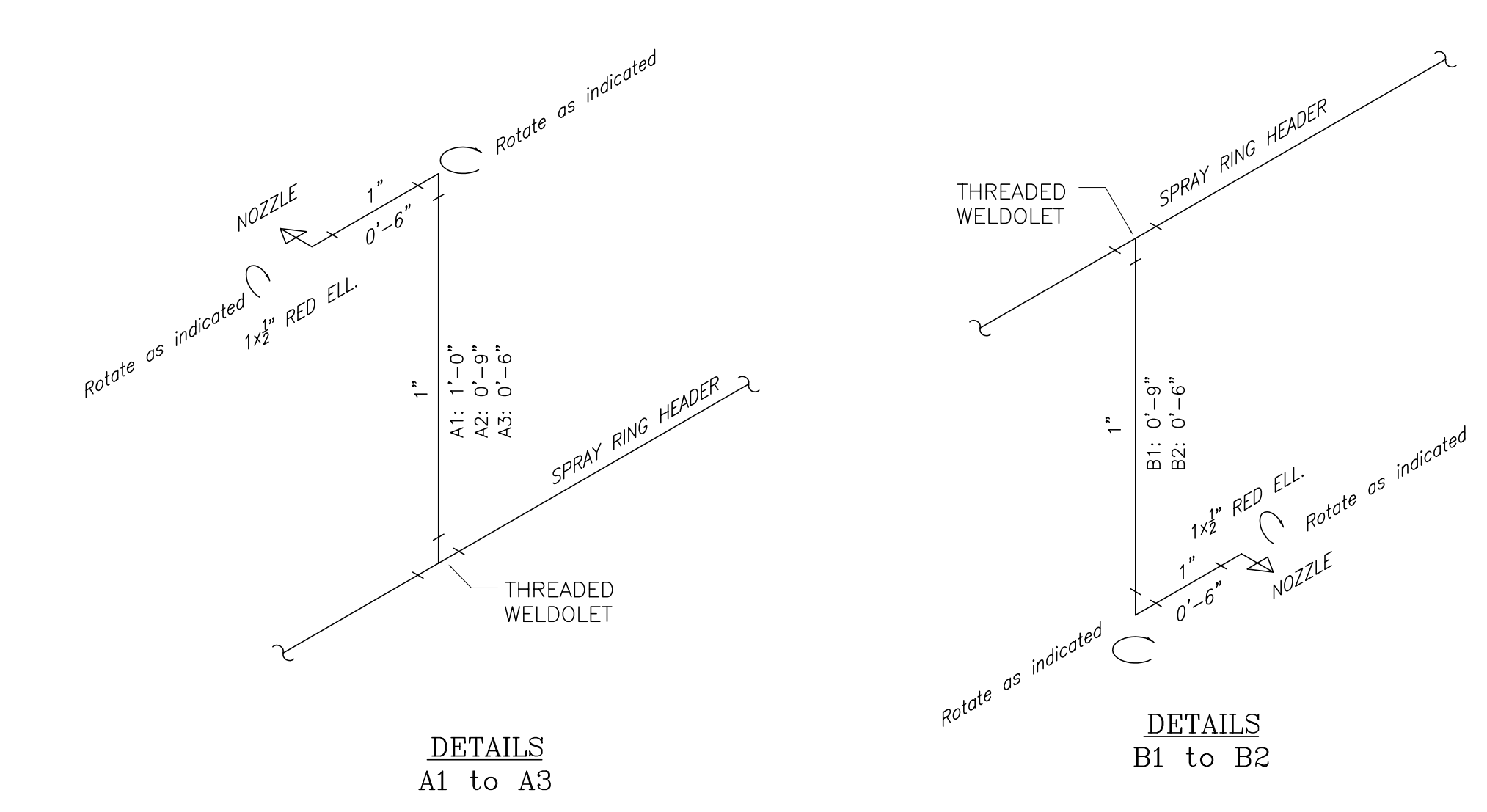
TYCO TYPE D3 NOZZLE SCHEDULE

Nozzle #	K - Factor	TYPE	Elevation (ft)	DETAIL	Aiming Angle From Vertical	Manufacturer Part #
N01	5.6	85°	14'-5"	A1	85°	P/N 49-382-1-085
N02	5.6	85°	14'-5"	A2	85°	P/N 49-382-1-085
N03	5.6	85°	14'-5"	A1	85°	P/N 49-382-1-085
N04	4.1	85°	13'-4"	A2	85°	P/N 49-388-1-085
N05	3.0	80°	13'-4"	A2	80°	P/N 49-384-1-080
N06	4.1	85°	13'-4"	A2	85°	P/N 49-388-1-085
N07	5.6	85°	14'-5"	A1	85°	P/N 49-382-1-085
N08	5.6	85°	14'-5"	A2	85°	P/N 49-382-1-085
N09	3.0	80°	13'-0"	B1	80°	P/N 49-384-1-080
N10	3.0	80°	13'-0"	B1	80°	P/N 49-384-1-080
N11	3.0	80°	13'-0"	B1	80°	P/N 49-384-1-080
N12	3.0	80°	11'-10"	B1	80°	P/N 49-384-1-080
N13	3.0	80°	11'-10"	B1	80°	P/N 49-384-1-080
N14	3.0	80°	13'-0"	B1	80°	P/N 49-384-1-080
N15	3.0	80°	13'-0"	A2	80°	P/N 49-384-1-080
N16	3.0	80°	8'-0"	A2	80°	P/N 49-384-1-080
N17	3.0	80°	8'-0"	B1	80°	P/N 49-384-1-080
N18	3.0	80°	8'-0"	B1	80°	P/N 49-384-1-080
N19	3.0	80°	8'-0"	A2	80°	P/N 49-384-1-080
N20	3.0	110°	8'-0"	A2	60°	P/N 49-384-1-110
N21	3.0	80°	8'-0"	A2	70°	P/N 49-384-1-080
N22	3.0	80°	2'-0"	A3	80°	P/N 49-384-1-080
N23	3.0	80°	2'-0"	A3	80°	P/N 49-384-1-080
N24	3.0	80°	2'-0"	A3	80°	P/N 49-384-1-080
N25	2.3	140°	8'-6"	B1	75°	P/N 49-391-1-140
N26	2.3	140°	8'-6"	B1	75°	P/N 49-384-1-080
N27	3.0	80°	8'-0"	A1	80°	P/N 49-384-1-080
N28	3.0	80°	8'-0"	B1	75°	P/N 49-384-1-080
N29	3.0	80°	8'-0"	B1	75°	P/N 49-384-1-080
N30	3.0	80°	8'-0"	B1	75°	P/N 49-384-1-080
N31	3.0	80°	8'-0"	B1	75°	P/N 49-384-1-080
N32	3.0	80°	8'-0"	B1	75°	P/N 49-384-1-080
N33	3.0	80°	8'-0"	B1	75°	P/N 49-384-1-080
N34	3.0	80°	8'-0"	B1	75°	P/N 49-384-1-080
N35	3.0	80°	8'-0"	B1	75°	P/N 49-384-1-080
N36	3.0	80°	8'-0"	B1	75°	P/N 49-384-1-080
N37	3.0	80°	8'-0"	B1	80°	P/N 49-384-1-085

HYDRAULICALLY MOST REMOTE NOZZLE

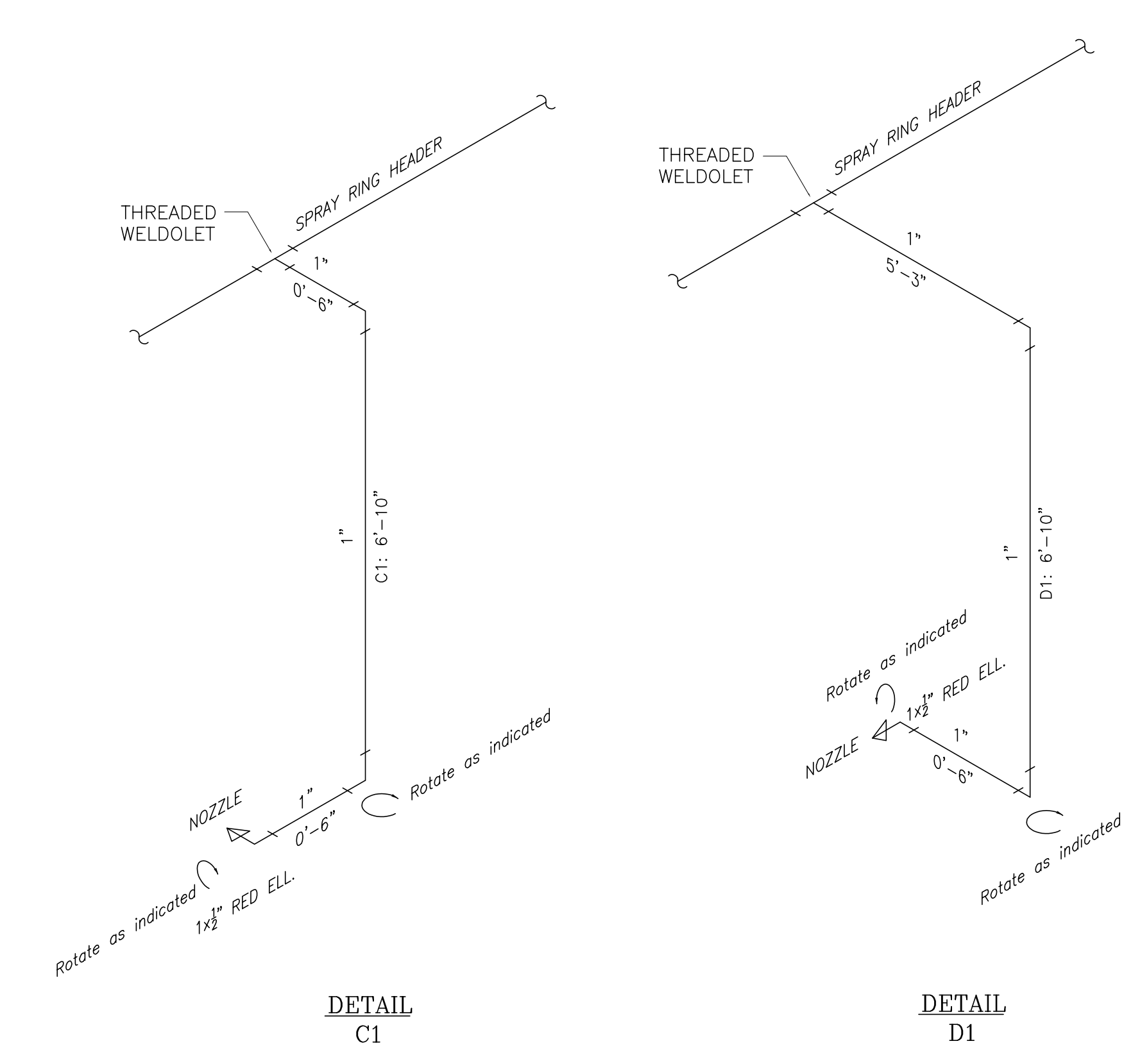


NOZZLE AIMING & ELEVATION (TYPICAL)



DETAILS A1 to A3

DETAILS B1 to B2



DETAIL C1

DETAIL D1

NOZZLE TYPICAL DETAILS (CENTER TO CENTER DIMENSIONS) NTS